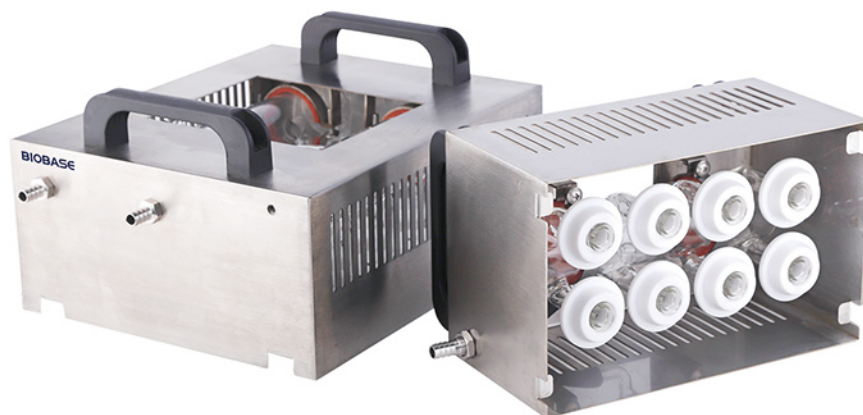


## Gas Collection Hood



### Introduction:

This collecting device is specially designed for the digestion furnace acid gas collecting device, it can collect a large amount of acid gas (acid fog) generated in the process of sample digestion, and then through the neutralization device for processing.

### Features:

- \* The sealing cover is made of polytetrafluoroethylene, resistant to high temperature, strong acid and alkali.
- \* The collecting tube collects acid gas deep inside the tube with high reliability.
- \* It is designed as a conical plus cap structure, and each seal cap weighs 35g.
- \* Using gravity seal, sealing reliable and convenient.
- \* The shell is welded with 316 stainless steel plate, which has good corrosion resistance.

### Technical Parameters:

Model	GCH-10	GCH-15	GCH-20
Collecting Port	10	15	20
Air Extraction Port	1	2	2
Apply	BKD-10RS BKD-10RL	BKD-15RS BKD-15RL	BKD-20RS BKD-20RL
Package Size (W*H*D) mm	350*260*260	350*260*260	350*260*260
Gross Weight (kg)	3	4	4.2